



Stamford American
SCHOOL HONG KONG

ADMISSIONS HANDBOOK

2026/2027



"The terms "School" and "Stamford" used in this book refer to Stamford American School Hong Kong (School Registration No.: 605638) and/or Stamford American School Hong Kong (West Kowloon) (Provisional School Registration No.: 626864) (as applicable).



Stamford American
SCHOOL HONG KONG

**THRIVE IN A RAPIDLY
EVOLVING WORLD**



TABLE OF CONTENTS



GUIDING STATEMENTS 4

ADMISSION REQUIREMENTS 6

ADMISSION FEES & INFORMATION 9



GUIDING STATEMENTS

VISION

As a school community, we will continually strive to provide the best teaching and learning experiences for all so that students will thrive in a rapidly evolving world.

CORE VALUES



INTEGRITY

We act with honesty, fairness, and respect, upholding the highest ethical standards.



COURAGE

We empower our diverse community to embrace challenges, take calculated risks, and grow through their experiences.



INNOVATION

We cultivate creativity, collaboration, and a solutions-oriented mindset to positively impact our world.



COMPASSION

We nurture a caring community that celebrates diversity, practices empathy, kindness, and champions global citizenship.



SCHOLARSHIP

We cultivate a community of dedicated learners who pursue academic excellence, intellectual curiosity, and the continual expansion of knowledge and skills.

PROGRAMS

Stamford offers a rigorous standardized curriculum based on the American Education Reaches Out (AERO) and Common Core Plus standards, culminating in the International Baccalaureate Diploma Programme in Grades 11 and 12. We use an inquiry-based approach and nurture every child's growth through personalized learning approach. Our curriculum is broad and academically rigorous. It incorporates the best practices in education and benefits from continuous improvement.

GUIDING PRINCIPLES

At Stamford American School Hong Kong and Stamford American School Hong Kong (West Kowloon):



INTEGRITY

We will be a reflective and thoughtful community that listens to feedback and seeks input from various resources to successfully guide our progress.

We will recruit, retain, and professionally develop experienced, globally-minded educators who are experts in their area.



COURAGE

Ensure strong safeguarding policies and procedures are in place to promote health, safety, and wellness, so all students feel safe, happy, and eager to learn.

We will personalize learning so all students achieve growth to become confident and capable independent lifelong learners.



INNOVATION

Through an inquiry-based approach, we will foster intellectual curiosity and a passion for learning.

We will cultivate students as future leaders in science, technology, engineering, mathematics, and innovation.



COMPASSION

We will continue to develop a caring community that engages and supports happy and passionate staff, students, and parents.

We will respect diversity within and outside of our community, ensuring an inclusive environment for all.

We will cultivate compassion, intercultural understanding, and respect among students through service learning and initiatives that contribute to a better world.



SCHOLARSHIP

Maintain high standards of academic progress, achievement, and performance, including preparation for admission to first-choice universities.

We will support the holistic development of students by providing a broad and balanced curriculum and diverse CCA programs.

We will develop a global mindset in all students as part of the IB Learner Profile and support multiple career pathways by offering differentiated, student-centered programs.

We will support a variety of learning needs, including English as an additional language, native language support, support for learning needs, enrichment, and counseling so that each individual can achieve success.



ADMISSION REQUIREMENTS

Students applying to Stamford American School will be invited for an assessment that will vary according to students' prior performance and proficiency levels.

The following elements are compulsory:

- 1) Students will be required to provide official transcripts or report cards for the current academic year and two years prior to the current academic year. In the event of students applying to Pre-primary, Grade 1 and Grade 2 where 3 full academic years are not available, please submit all available student records.
- 2) A Confidential Teacher Recommendation Form from the student's current school will be required for submission with the full student records (if applicable). This recommendation will ask the teacher to attest to the student's academic performance and importantly the engagement of the student in learning. Behavioral aspects in relation to their engagement in class activities and working with other students will also be assessed.
- 3) Students will be asked to complete a Student Questionnaire (Only for students applying to Grade 6 and above).
- 4) While English is the language of instruction, we accept students who may not have proficiency in English and require them to have a proficiency test to determine their needs in relation to them accessing the teaching and learning at Stamford.

There are exceptional cases when we may offer places before an assessment based on the school reports and Teacher Recommendation Form, particularly for those currently living overseas. However, it is mandatory to have an assessment before the start of school which can be arranged at a later date.

AGE GUIDELINES (2026/2027)

The date of reference for grade placement by birthdate is September 1st for Pre-primary through to Grade 12.

Class	Age	Date of Birth
Pre-primary	Age 5 - 6	Sept 1, 2020 – Aug 31, 2021
Grade 1	Age 6 - 7	Sept 1, 2019 – Aug 31, 2020
Grade 2	Age 7 - 8	Sept 1, 2018 – Aug 31, 2019
Grade 3	Age 8 - 9	Sept 1, 2017 – Aug 31, 2018
Grade 4	Age 9 - 10	Sept 1, 2016 – Aug 31, 2017
Grade 5	Age 10 - 11	Sept 1, 2015 – Aug 31, 2016
Grade 6	Age 11 - 12	Sept 1, 2014 – Aug 31, 2015
Grade 7	Age 12 - 13	Sept 1, 2013 – Aug 31, 2014
Grade 8	Age 13 - 14	Sept 1, 2012 – Aug 31, 2013
Grade 9	Age 14 - 15	Sept 1, 2011 – Aug 31, 2012
Grade 10	Age 15 - 16	Sept 1, 2010 – Aug 31, 2011
Grade 11	Age 16 - 17	Sept 1, 2009 – Aug 31, 2010
Grade 12	Age 17 - 18	Sept 1, 2008 – Aug 31, 2009

ADMISSIONS PRIORITY

Stamford gives admissions priority in the following circumstances:

- (a) Child nominated by Platinum Corporate Debenture
- (b) Child nominated by Standard Plus Corporate Debenture
- (c) Child nominated by Standard Corporate Debenture
- (d) Child nominated by Individual Debenture holder
- (e) Siblings of existing students and alumni attending Stamford
- (f) U.S. citizens
- (g) Students who have attended other Cognita international schools
- (h) All others

WAIT POOL

If a place is not available at the time you wish to join, your child will be placed in the wait pool in the same applying academic year, and you will be notified as soon as a vacancy is anticipated. Please notify the admissions office of any changes to your contact details.



CONDITIONS FOR ADMISSION TO THE INTERNATIONAL BACCALAUREATE DIPLOMA PROGRAMME (IBDP)

The IB Diploma Programme (IBDP) is a rigorous pre-university course of study designed for students in Grades 11 and 12. It is a broad-based two-year course that asks students to be knowledgeable, inquiring, caring and compassionate. In addition to academics, students will develop intercultural understanding, open-mindedness, and the skills necessary for them to respect and evaluate a range of points of view.

During Grade 10 course selections, all students receive information about the sign-up process and the nature of each of the courses offered. Students who choose not to pursue the full Diploma Programme (DP) will still complete the course selection process. They will select "Standard Level" (SL) DP courses and any other elective courses that may be available in a subject area. The DP Standard level courses are suitable for all grades 11, and 12 students enrolled at Stamford. Stamford offers the IB "Course" candidate option where students will sit final exams only for specifically selected courses, either Standard or Higher Level (HL).

In the full IB Diploma Programme, students study two modern languages (a "first" and "second" language), a humanities or social science subject, an experimental science, mathematics and one of the creative arts. Students have the flexibility to choose subjects that particularly interest them and wish to study further after graduation. Additionally, students complete the requirements for the core elements of the IBDP—the Theory of Knowledge course, Creativity-Activity-Service (CAS) and the Extended Essay. This comprehensive range of subjects makes the Diploma Programme a demanding course of study that prepares students effectively for university entrance.

During the years leading up to the Diploma Programme, students should:

- demonstrates safe and respectful behavior in social settings (no online bullying, fights, etc.)
- demonstrate academic honesty and integrity (no plagiarizing, collusion, cheating, ICT etc.)
- have at least 90% attendance record during the most recent 12 months of school
- have satisfactorily completed service-learning requirements during the most recent 12 months
- have no more than one '2' mark during the most recent 12 months of school
- have a minimal number of 'BE' (below expectations) marks for "Effort" and "Progress" during the most recent 12 months of school (case-by-case)
- have overall satisfactory reports from two current teachers related to 14 categories having to do with a general attitude toward learning, class interactions, etc.
- obtain a "4" or higher for "Sophomore Project"

Based on the submitted application, the guidelines listed above, and teacher recommendations, students are notified about their application's outcome by the end of the first semester.

NEW ADMISSIONS GRADE 11 AND 12

- Entrance is assessed by previous school's transcripts, written application, interviews and admission tests.
- Mid-year Grade 11 or first quarter Grade 12 entrants are not eligible for IB "Diploma" or "Course" (unless they transfer credits from another IB school).
- Students will be assisted with course selection upon successful enrollment.

ADMISSION FEES & INFORMATION

NON-REFUNDABLE CAPITAL LEVY

Non-Refundable Capital Levy per Student

(Payable upon acceptance - Please choose an option):

Option A: One-time Capital Levy *(Valid for the duration at Stamford)*

HK\$ 150,000

Option B: Annual Capital Levy *(2026/2027)*

HK\$ 30,000

The One-time Capital Levy or Annual Capital Levy is mandatory for students who are admitted to Stamford without a debenture.

The One-time Capital Levy for a new student who has been accepted to the school is currently HK\$ 150,000. This non-refundable, non-transferable amount is payable within 7 calendar days from the date of the offer in order to secure a place. If payment is not received within this date, priority will be given to other applicants.

Payment of the One-time Capital Levy exempts the student from any other capital levies for the duration of his or her education at Stamford.

Alternatively, children who are admitted to Stamford without a debenture may elect to pay an Annual Capital Levy. The Annual Capital Levy for the 2026/2027 academic year is HK\$ 30,000. This amount is non-refundable, and non-transferable. At the time of acceptance, to secure a place with this option, families must pay the Annual Capital Levy in full, as well as a tuition fee offset of HK\$ 30,000. The tuition fee offset payment will be offset against the student's final tuition fee invoice prior to the student withdrawing or graduating from Stamford. If payment of the Annual Capital Levy and the tuition fee offset payment is not received within 7 calendar days of receipt of the school's acceptance letter, priority will be given to other applicants.

The Annual Capital Levy amount is reviewed each school year and must be paid each school year if the student has not paid the One-time Capital Levy or is not nominated by a debenture.



ADMISSION FEES & INFORMATION

PROJECTED STAMFORD AMERICAN SCHOOL TUITION FEES FOR 2026/27*

Classes	Monthly	Annual Fee	Campus
Pre-Primary - Grade 2	HK\$ 21,990	HK\$ 219,900	Stamford American School (Ho man Tin Campus)
Grade 3 - Grade 5	HK\$ 22,720	HK\$ 227,200	Stamford American School (Ho man Tin Campus)
Grade 6 - Grade 8	HK\$ 24,930	HK\$ 249,300	Stamford American School (Ho man Tin Campus)
Grade 9 - Grade 10	HK\$ 25,700	HK\$ 257,000	Stamford American School (West Kowloon Campus)
Grade 11 - Grade 12	HK\$ 27,440	HK\$ 274,400	Stamford American School (West Kowloon Campus)

*The fees are subject to approval by the EDB.

BILLING SCHEDULE

	Invoice Date
Semester 1	May
Semester 2	October



Notes

All charges are expressed in Hong Kong Dollars (HK\$). These fees are payable per student and are adjusted annually. School fees include all textbooks and workbooks. These fees do not include additional resources such as field studies, transportation, school meals, yearbook, and other fees that may be incurred during the school year. These fees do not cover additional external courses or exams such as for Virtual High School (VHS) or IBDP, ACT and SAT exams, which are charged directly by their respective organizations. Additional charges may apply including EAL and learning support, which will be assessed on an individual basis. Replacement of lost textbooks, workbooks, library books, and other school resources will need to be reimbursed by the student/family prior to the distribution of additional resources. Tuition fees are non-transferable. Tuition fees may be refundable subject to our refund policies.

PAYMENT

All charges are expressed in Hong Kong Dollars (HK\$).

Tuition Fees: Tuition fees must be paid by direct debit over 10 monthly instalments from August to May. Direct debit authorisation must be completed prior to the start of the academic year.

Other Charges: Payment may be made by local cheques and bank-to-bank or wire transfers. US\$ cheques or payments made in other currencies will not be accepted. All cheques should be "crossed" and made payable to "Flora Education Limited". Post-dated cheques are not accepted.

TELEGRAPHIC TRANSFER/ WIRE TRANSFER DETAILS

Account Name: FLORA EDUCATION LIMITED

Account Number: 741-014260-001

Bank Name: The Hongkong and Shanghai Banking Corporation Limited

Bank Address: HSBC Main Building, 1 Queen's Road Central,
Hong Kong Bank Code: 004

Branch Code: 741

SWIFT Code: HSBCHKHHHKH

PAYMENT BY EMPLOYERS OR THIRD PARTIES

If school fees are to be paid by a company/employer, please complete the Letter of Guarantee form and submit it to the Admissions Office. An authorized representative from the company/ employer will need to sign and stamp this form. Parents are responsible for keeping their company/ employer informed of all information regarding Tuition Fee, payment terms and all other fees. Financial responsibility for all school fees remains with the parents irrespective of payments made by third parties.

DISCOUNTS

Capital Levy Fee: 50% discount for enrollment of a third child from the same family and a full waiver of the Capital Levy Fee for a fourth child and beyond. For the avoidance of doubt, a child who withdraws from the School before completion of Grade 12 would not be taken into account when assessing whether the abovementioned discount or waiver would be applicable, and the parent will have to pay such applicable One-Time Capital Levy and/or Annual Capital Levy Fee as if the withdrawn child never enrolled in the School.

(Discounts are applied from the oldest to the youngest. For example, if there are 3 children in the family, the youngest child will receive the discount.)

INCLUSIVE ADMISSIONS PROCESS

We offer a personalized admissions process that recognizes and values each child's unique talents and abilities. Our expertly designed curriculum and dedicated faculty—including specialists in English as an Additional Language (EAL) and Student Support—ensure we can nurture a wide range of learners. We encourage parents to discuss any individual needs with our admissions team before applying, as our ability to support students is assessed on a case-by-case basis.

Additional charges may apply.

AGREEMENT

Parents are advised to read the financial conditions thoroughly before submitting a formal application for enrollment. Your signature on the Application Form implies an acceptance of the school's Personal Data Collection Statement. Detailed Terms and Conditions are available on the school website. Should you require more information, please contact the finance team at finance@sais.edu.hk

DEBENTURES

To provide for the repairs, maintenance, and improvement of the school's facilities for the benefit of all students, Stamford American School raises funds through

- The issuance of debentures, and
- The collection of capital levies

Stamford issues a very limited number of optional debentures. There are four types of debentures ranging from HK\$ 500,000 to HK\$ 5,000,000. The holder of a debenture obtains priority in admissions, subject to Stamford's eligibility requirements. All children nominated by a debenture are exempted from the mandatory capital levy.

For more information on the availability of Corporate Debentures and their terms and conditions, please contact our Director of Admissions at: admissions@sais.edu.hk

Please refer to the table below for the types of Debentures available and their priority level:

Priority	Debenture Type	Key Elements
1	Platinum Corporate Debenture	Ranging from HK\$ 2,000,000 to HK\$ 5,000,000 to subscribe.
2	Standard Plus Corporate Debenture	<ul style="list-style-type: none"> • Non-refundable, non-interesting bearing, but transferable • Priority in admissions
3	Standard Corporate Debenture	<ul style="list-style-type: none"> • 15 consecutive academic years • For corporate applicants approved by the school
4	Individual Debenture	<p>HK\$ 500,000 to subscribe</p> <ul style="list-style-type: none"> • Non-transferable • Refundable at a reduced value depending on the academic year in which the child leaves the school • The refunded debenture value will be reduced by any outstanding fees payable to the school, please refer to table below • Student must be covered either by the debenture or capital levy if the debenture is expired • Nomination of one child • 8 consecutive academic years from enrolment • For non-corporate applicants

Date when student leaves the school (both dates inclusive)	Amount refunded (HKD)
Before 2026/27*	HK\$ 400,000
1 Jul 2026 - 30 Jun 2027	HK\$ 400,000
1 Jul 2027 - 30 Jun 2028	HK\$ 350,000
1 Jul 2028 - 30 Jun 2029	HK\$ 300,000
1 Jul 2029 - 30 Jun 2030	HK\$ 250,000
1 Jul 2030 - 30 Jun 2031	HK\$ 200,000
1 Jul 2031 - 30 Jun 2032	HK\$ 150,000
1 Jul 2032 - 30 Jun 2033	HK\$ 100,000
1 Jul 2033 - 30 Jun 2034	HK\$ 50,000
On or after 1 Jul 2034	HK\$ 0

*shown in the academic year represent leaving before 30 June each year

STUDENT CONTRACT

The Student Contract is an important legal document between the school, each student, and their parents or legal guardians that details the school rules, fees, and refund policies. Execution of this contract before a student starts school is for the protection of Stamford students and each student/ parent/legal guardian should read the contract carefully before signing. Please note that failure to disclose important information during admissions may render the Student Contract null and void and result in termination of enrolment.

CANCELLATION OF ACCEPTANCE

If, for any reason, parents cancel their acceptance of a place before the student starts at Stamford, **the Capital Levy and tuition fee offset will not be refunded.**

Once a student is confirmed and admitted to Stamford American School Hong Kong and/or Stamford American School Hong Kong (West Kowloon) for an academic year, deferrals are not permitted. Families wishing to defer must reapply, re-assess and receive a new offer for the following academic year, and all previously paid fees will be forfeited. Families deciding to withdraw a student from Stamford are required to provide a written notice three calendar months prior to the student's last day of attendance. Tuition fees are charged up to the calendar month of the student's last day of attendance, and any tuition fees collected in respect of any calendar month thereafter will be refunded.

ANNUAL RE-ENROLLMENT PROCESS

Each year, Stamford conducts a re-enrollment process in Quarter 4, when parents are asked to confirm through an online form whether their child(ren) will continue at the school for the following academic year, starting in August. Upon confirmation of re-enrollment, a re-enrollment deposit is required. This early process allows us to plan effectively for school operations, staffing, and resource allocation, ensuring our students continue to receive a well-resourced, high-quality education. Please note that if a re-enrolled student withdraws during the summer holiday period before the new academic year begins, the re-enrollment deposit will be forfeited.

WITHDRAWALS

Families who have decided to withdraw a student from Stamford are required to submit the online withdrawal form or provide written notice to Stamford. Tuition fees are charged up to the calendar month of the student's last day of attendance, and any tuition fees collected in respect of any calendar month thereafter will be refunded. For details, please refer to our refund policies.

If a re-enrolled student needs to withdraw during the summer holiday period before the first day of the new academic year, the re-enrollment deposit is forfeited.

Prepaid tuition fees may be refundable in part in accordance with the above requirements. However, no refund will be available if the outstanding school fees (including any fees in lieu) exceed the prepaid tuition fees. The finance team will issue a statement of account within 7 working days after the student's last day of attendance, detailing any amounts payable or refundable.

Please contact admissions@sais.edu.hk to receive an official link for the online withdrawal form. Please note that the form requires the signature of a parent or official guardian.

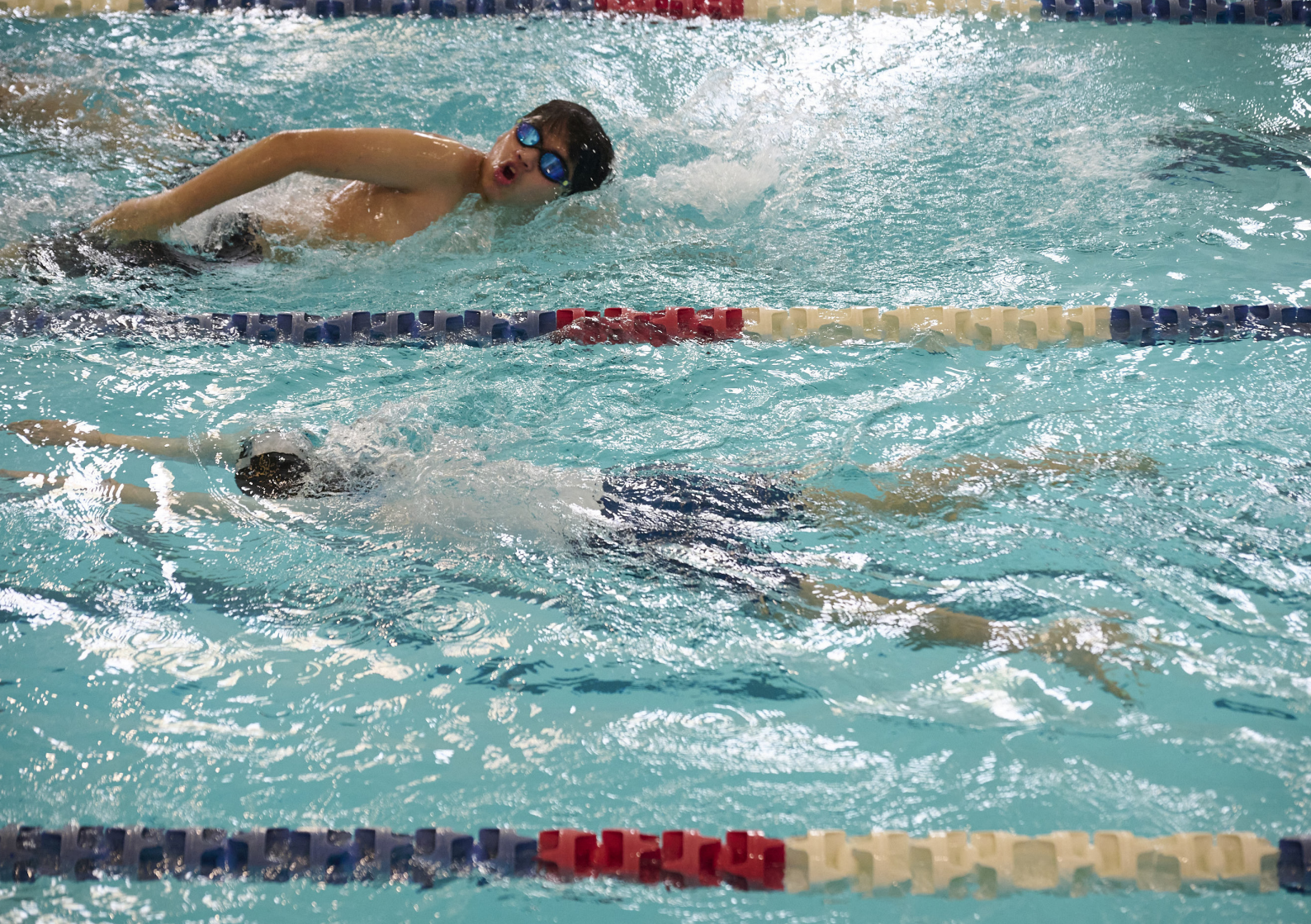
SCHOOL TIMES

Ho Man Tin Campus (Pre-Primary to Grade 8)
7:45AM - 2:50PM Monday to Friday

West Kowloon Campus (Grade 9 to Grade 12)
7:45AM - 2:45PM Monday to Friday

SCHOOL CHANGES

The school, as any other, is likely to undergo a number of changes during the time your child is here. For example, there may be changes in staff, in the premises, facilities and their use, in the curriculum, the size and composition of classes, the Terms and Conditions, the disciplinary framework, and the length of the school year. Tuition and school fees will be regularly reviewed and adjusted annually.





Stamford American
SCHOOL HONG KONG

SCHOOL CAMPUS

Ho Man Tin Campus

25 Man Fuk Road, Ho Man Tin,
Kowloon, Hong Kong

West Kowloon Campus

GF-2F Imperial Cullinan, 10 Hoi Fai Road,
Tai Kok Tsui, Kowloon, Hong Kong

T: +852 3467 4500

E: schooloffice@sais.edu.hk

ADMISSIONS

T: +852 2500 8688

E: admissions@sais.edu.hk

www.sais.edu.hk

The terms "School" and "Stamford" used in this book refer to Stamford American School Hong Kong (School Registration No.: 605638) and/or Stamford American School Hong Kong (West Kowloon) (Provisional School Registration No.: 626864) (as applicable). Printed Apr 2026

COGNITA

THRIVE IN A RAPIDLY EVOLVING WORLD